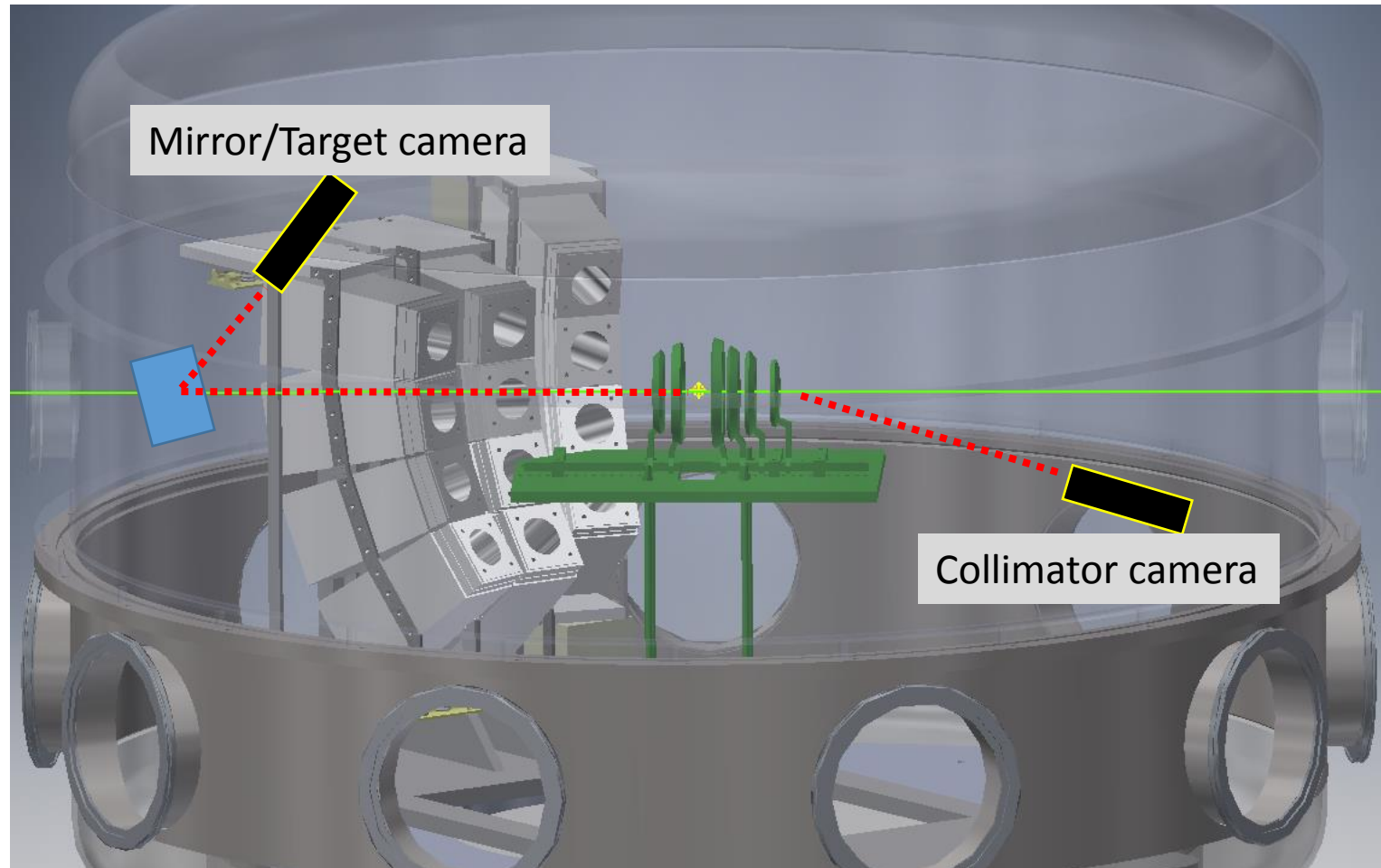
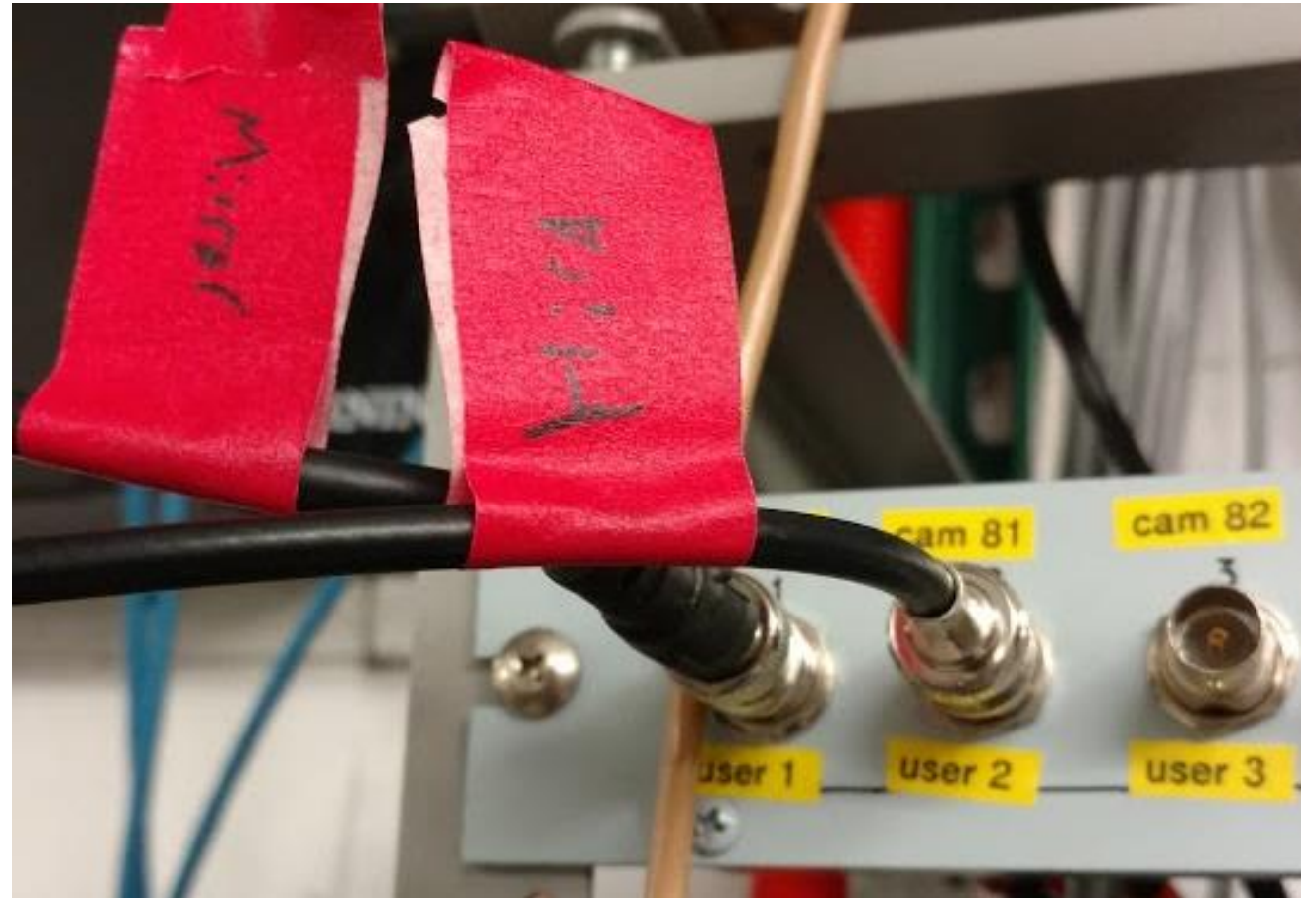


# Camera setup

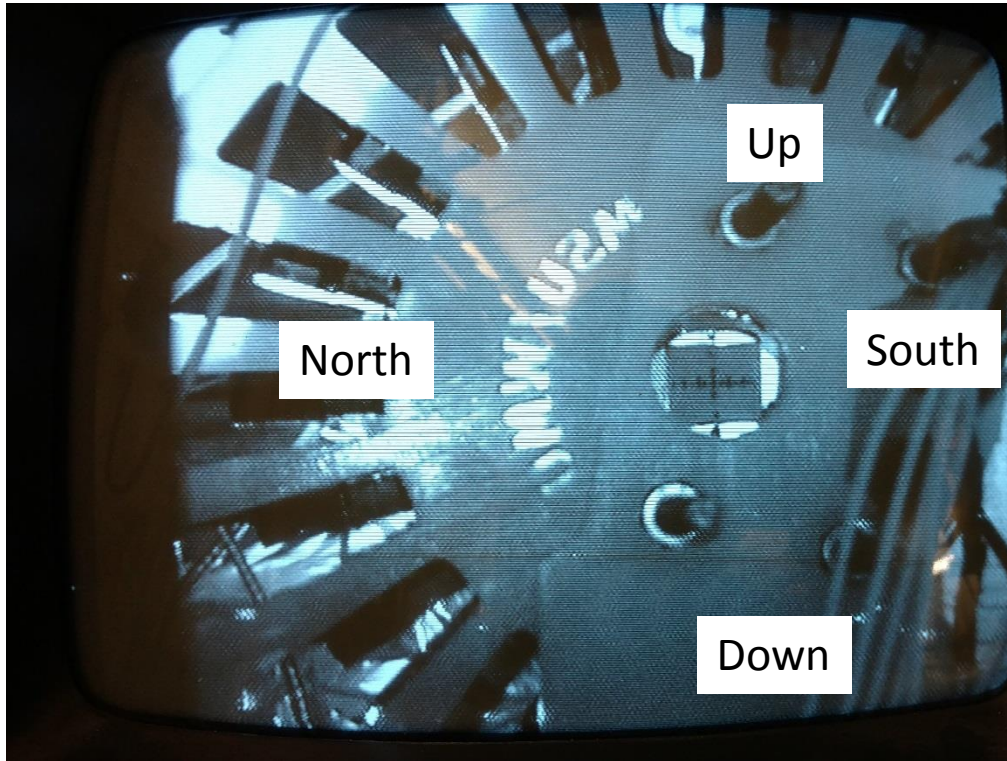


# Patch Panel

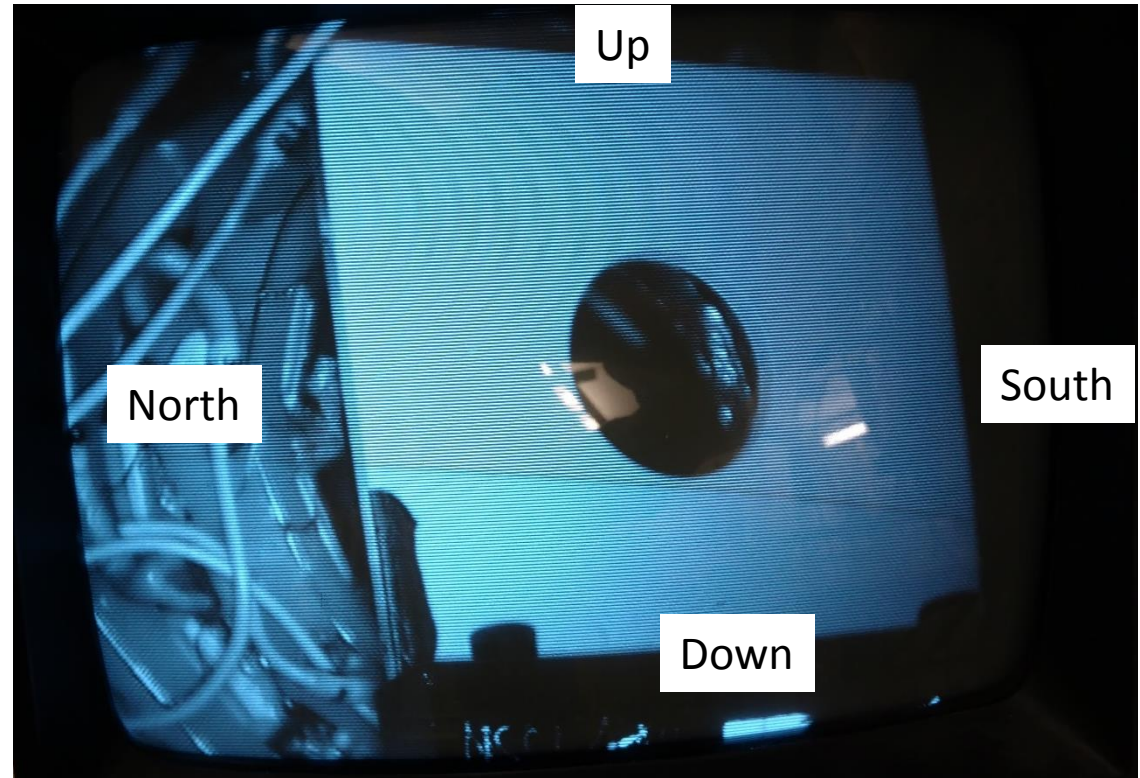
- Mirror/Target camera: “cam 80” / “user 1”
- Collimator camera: “cam 81” / “user 2”



# Sample Views

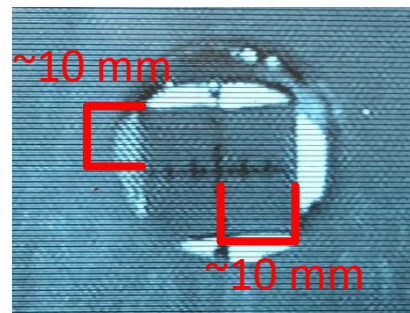


Mirror/target camera  
Viewer is about 20 mm on each side.



Collimator camera

Scale for viewer





# Power control

- Lights, camera controlled through panelmate
- Do not leave either on for extended periods of time as they will burn out!

