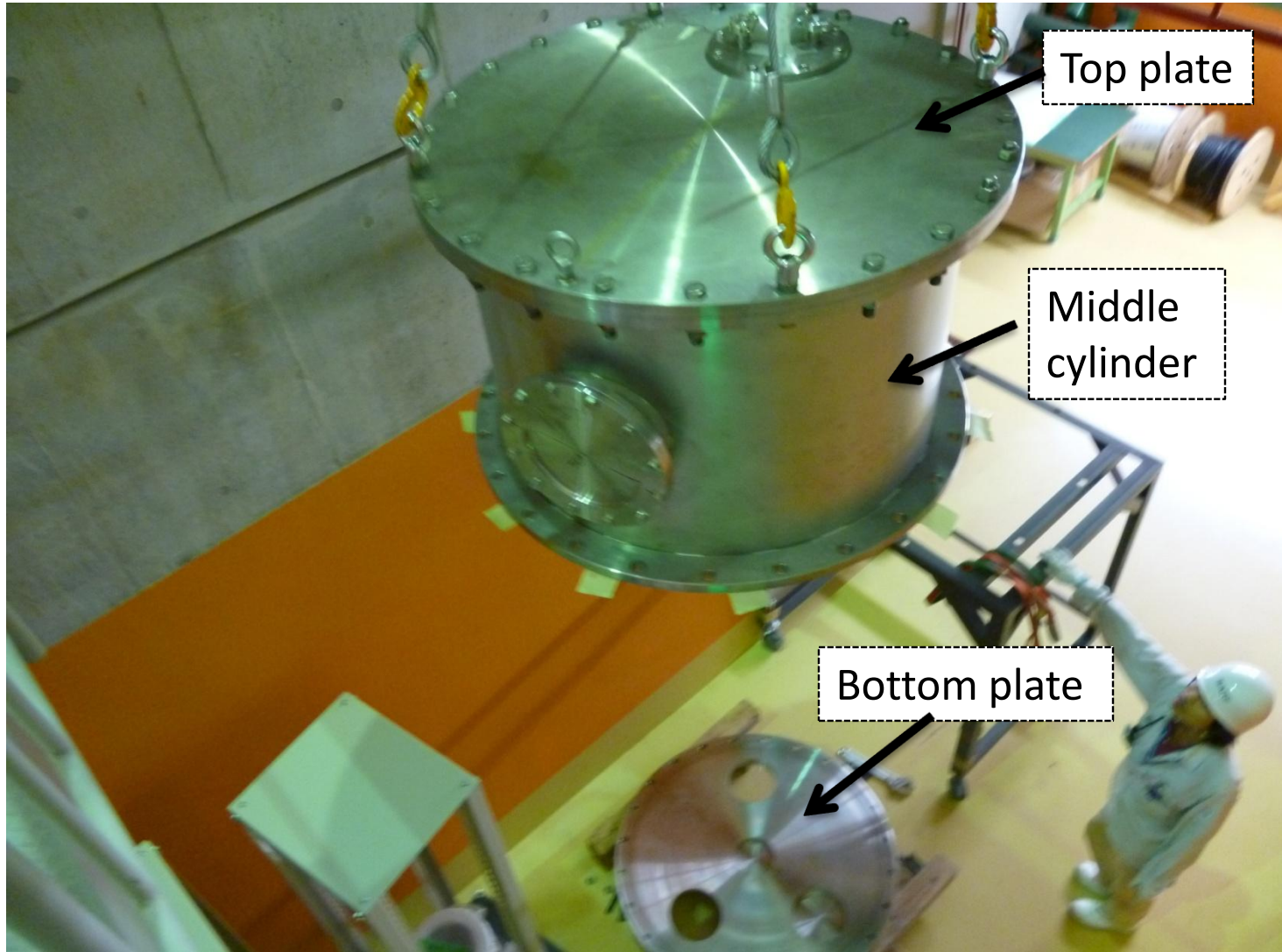


New Draft Schedule

June / 6 月

		29	30	31	1	2	3	4	5	6	7	8	9	10	11	12	13	14	15	16	17	18	19	20	21	22	23	24	25	26	27	28	29	30	1			
		Wed	Thu	Fri	Sat	Sun	Mon	Tue	Wed	Thu	Fri	Sat	Sun	Mon	Tue	Wed	Thu	Fri	Sat	Sun	Mon	Tue	Wed	Thu	Fri	Sat	Sun	Mon	Tue	Wed	Thu	Fri	Sat	Sun	Mon			
RIBF new facility (with SRC /IRC/frc)	AVF inj.																																					
	RILAC2 inj.																																					
	RILAC inj.																																					
		MS Acc. 400A MeV																																				
					124Xe acc. (6.5d)			B		Lynch										B		Lewitowicz										B		Lorusso				

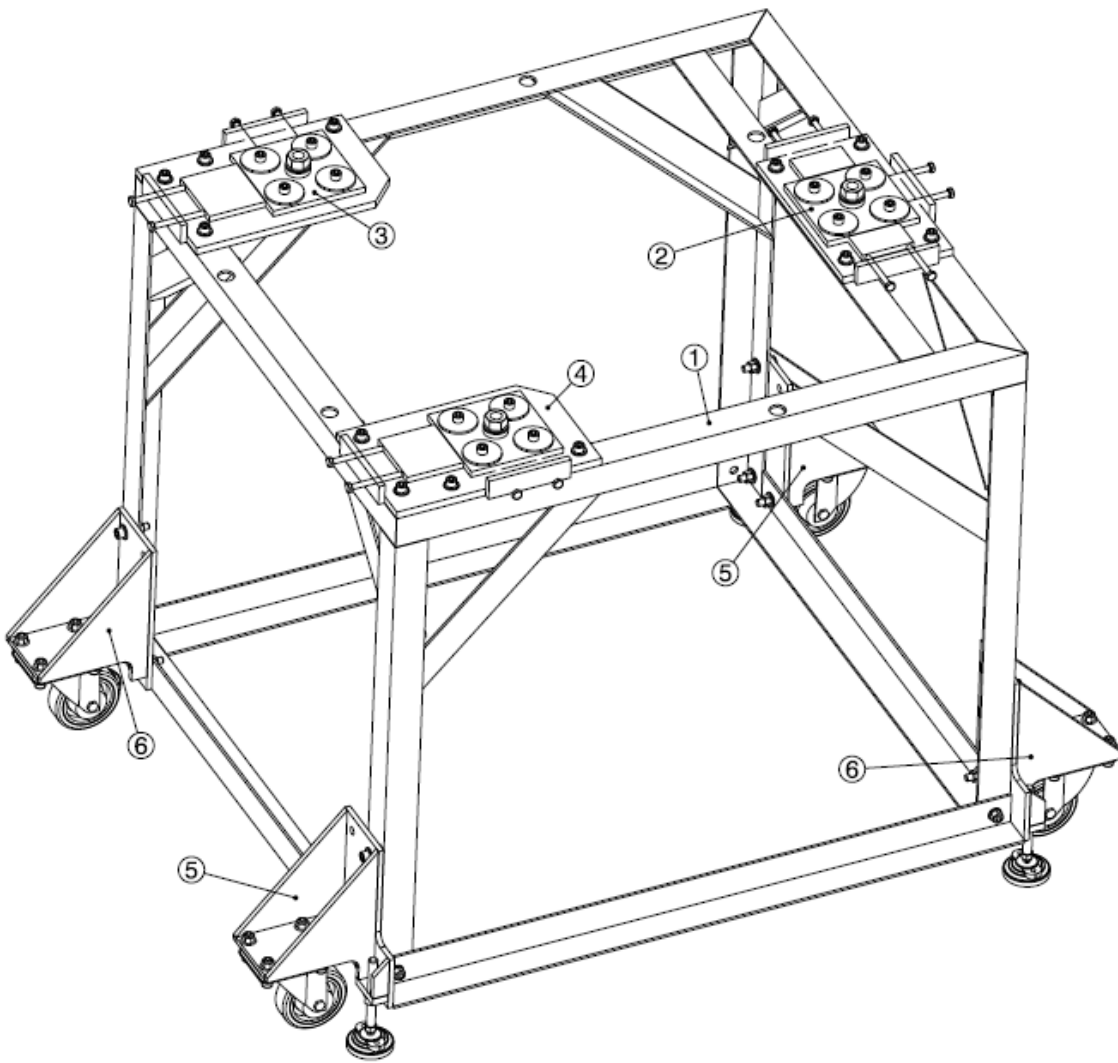
Chamber



Chamber Setup in MUST-II



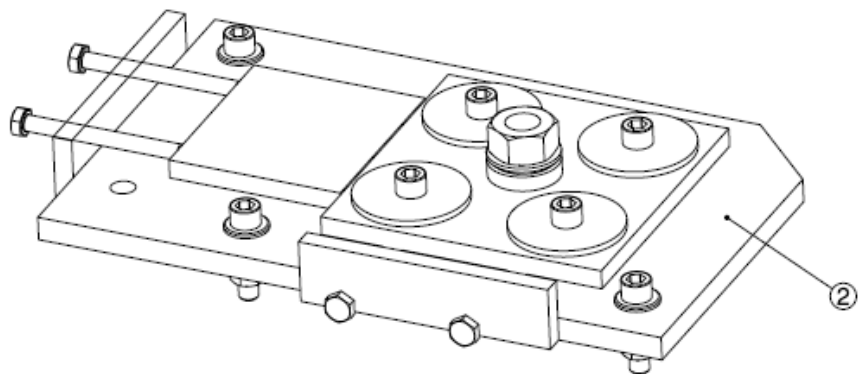
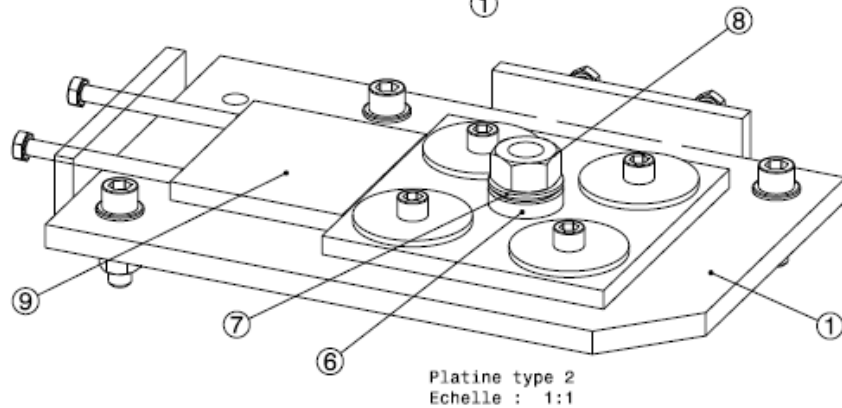
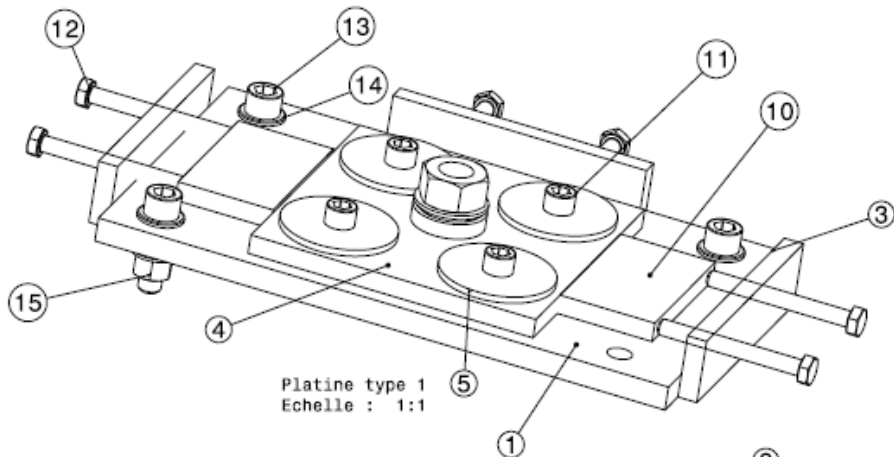
Translation plates I



Repère	Nom	Quantité	Etat
1	chassis Riken/ Riken frame	1	
2	platine réglage chambre type 1/ adjustment plate 1	1	
3	platine réglage chambre type 2 / adjustment plate 2	1	
4	platine réglage chambre type 3 : adjustment plate 3	1	
5	platine roue droite / right wheel frame	2	
6	platine roue gauche / left wheel frame	2	

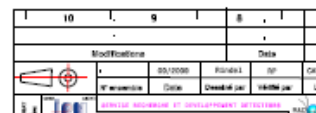
10	9	8	7	
Modifications			Date	Initiale
10/10/99	10/2/01	08	02/14	NS
M. Maréchal	Clare	Dumas de Jar	18/09/06	Laplatte

Translation plates details

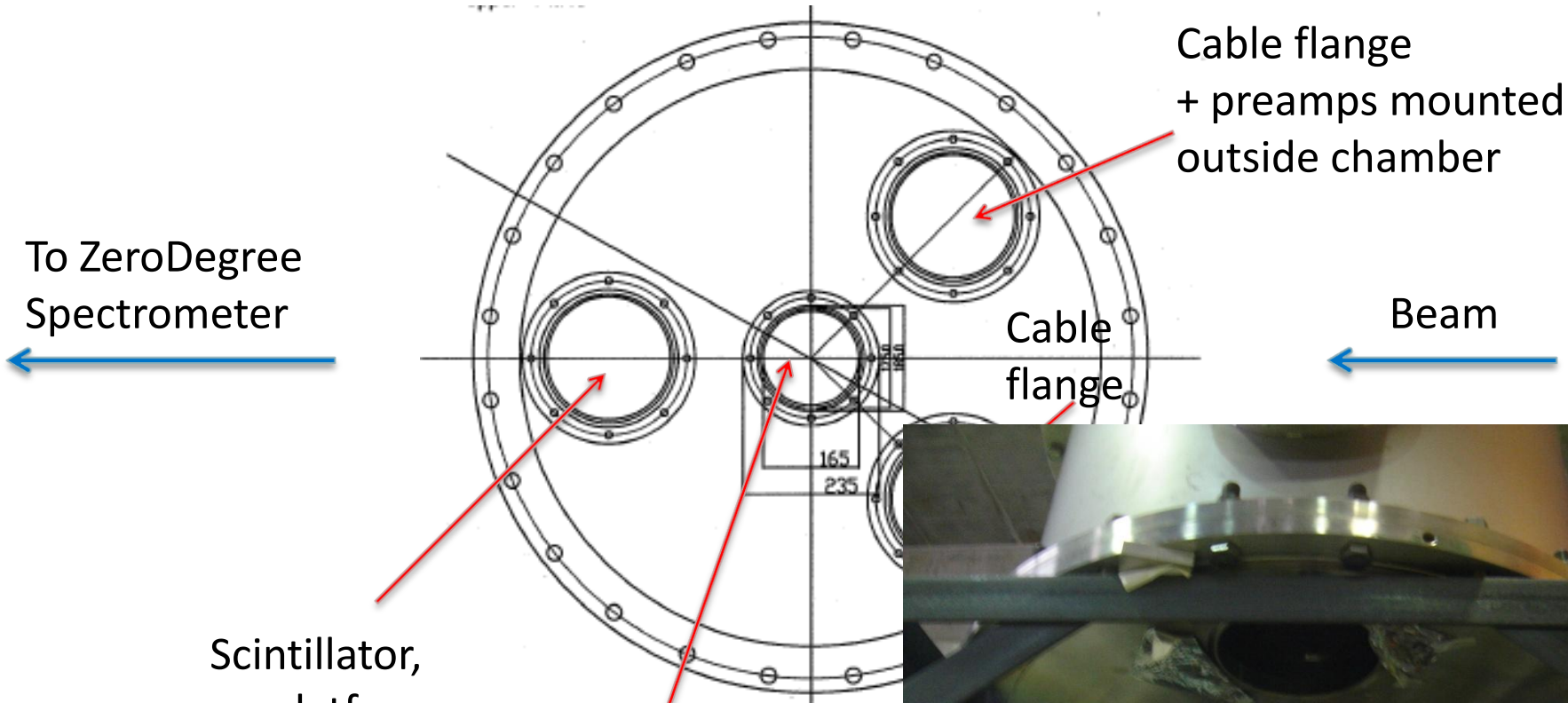


Repère	Nom	Quantité	Etat
1	Plaque fixe translation type 1 / fixed plate 1	2	New
2	Plaque fixe translation type 2 / fixed plate 2	1	New
3	plaque de poussée / push plate	7	New
4	platine réglage translation / translation plate	3	New
5	rondelle plate d13 x d35 x 3 / washer	3	New
6	rondelle concave d24 / concave washer d24	3	
7	rondelle convexe d24 / convex washer d24	3	
8	écrou M24/ Nut M24	9	
9	cale de poussée type 1/spacer 1	2	New
10	cale de poussée type 2 / spacer 2	4	New
11	vis Chc M12 x 30 / screw	12	
12	vis H M10 x 90 / screw	12	
13	vis Chc M12 x 50 / screw	12	
14	rondelle plate d12 / washer	24	
15	écrou M12 /nut	12	

Can RIKEN get this machined or get it from MUST-II group?



Chamber: bottom plate design



To ZeroDegree Spectrometer
←

Cable flange + preamps mounted outside chamber

Beam
←

Cable flange

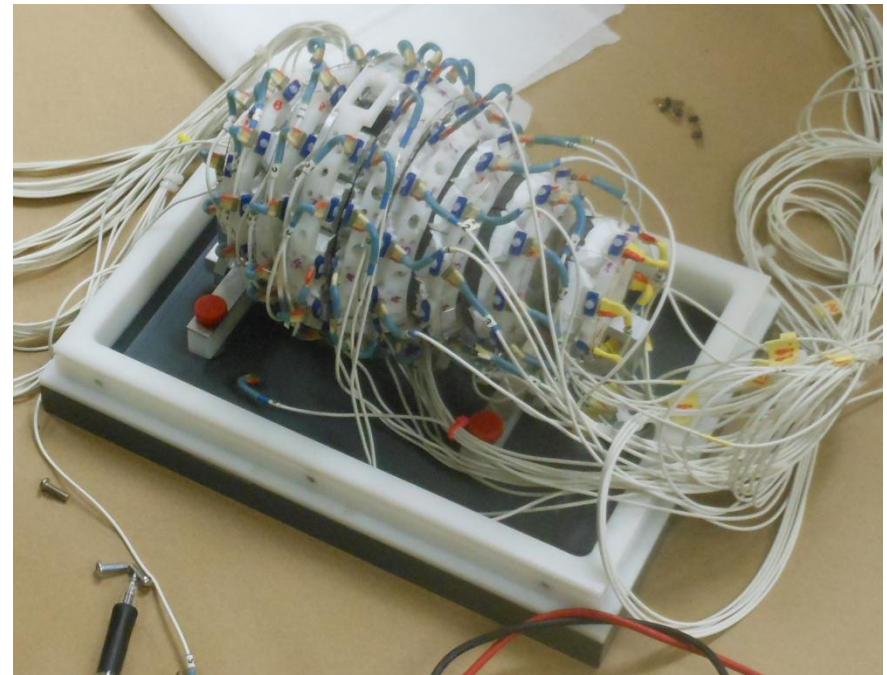
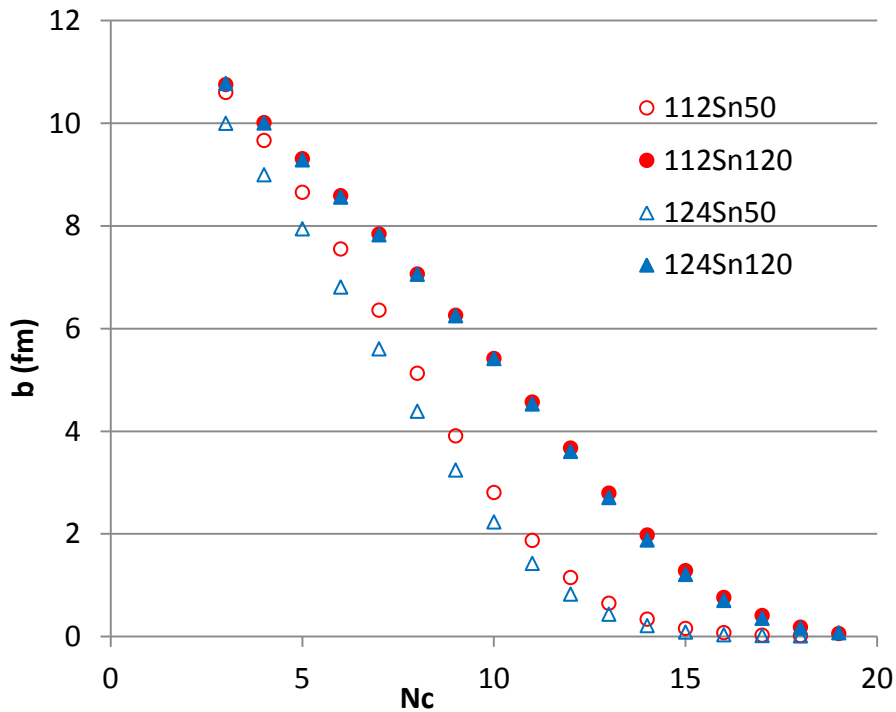
Scintillator, on platform with drive

Microball on stand + target ladder on drive + collimator



Microball Analysis

- Determination of b using N_c
- Requires downstream scintillator to normalize beam counts



Preparation To Be Completed

- Chamber
 - Translation plates -- Aki
- Microball Mount Design (Who can sketch this up?)
 - Microball should be centered on beamline (splitting rings apart)
 - Make a bar that can be used for design and testing easily
 - Platform mounts to center flange
 - Target drive mechanism moves from underneath
 - Attach collimator on platform
- Sn Target Ladder Design (Aki)
 - Moves between the two halves of microball
 - Need enough room below microball platform for ladder length to move in/out of beamline
 - Rachel will roll out targets this week
- Scintillator/beam counter downstream of target (Rachel)
 - Design of movable platform
- Need to buy two target mechanisms, remote controlled (Aki)

Preparation To Be Completed, continued

- Cables: (Can we get something for Aki to check this out or sketch out in the drawing?)
 - Length depends on position of microball, scintillator and distances to flanges
 - May need cable extenders for microball
- Electronics (Alfredo, when can this be sent to RIKEN?)
 - WU preamps mounted outside chamber
- Flanges: What type of flanges we can borrow from MSU? (This week)
- Adapters for flanges: based on cables used, designs of microball and scintillator platforms, preamps mounted to outside
- Machining:
 - Microball platform mount
 - Scintillator platform
 - Flange adaptors as needed

Rough Timeline

- February 15: finalize the design of the inside of chamber
- March 1: finalize design of target ladder
- April 1: start to order machining and other devices
- April 1: start to test electronics
- May 7: start to mount the detectors in chamber
- May 27: ready to install vacuum chamber to F8, check alignment. (Need to move the date in view of new schedule)
- June 10-15: Experiment runs (official as of Jan 28)
- June 27: User Meeting